

KIOTI TRACTOR DK20 SERIES

SPECIFICATIONS(Manual T/M)

MODEL		DK4520N	DK4520C	DK5020N/HS	DK5020C/CN	DK6020N/HS	DK6020C/CN
ENGINE							
Model		3HT-TM5B	3HT-TM5C	3HT-TM5B	3HT-TM5C	3HT-TM5B	3HT-TM5C
Type		In-line Vertical, Water-cooled, 4 cycle Diesel					
Engine Gross Power	HP(KW)	44.9(33.5)		50.3(37.5)		57.7(43.0)	
Total displace	cc (cu)	1,826					
Rated Revolution	rpm	2,600					
Fuel Tank Capacity	ℓ(us gal)	45(11.9)	48(12.7)	45(11.9)	48(12.7)	45(11.9)	48(12.7)
DRIVE TRAIN							
Transmission		Manual / H-Shuttle	Manual	Manual / H-Shuttle	Manual	Manual / H-Shuttle	Manual
Main gear shift x range gear shift		4 x 4					
No. of speeds		16F16R					
shuttle Type		Synchro shuttle		Synchro shuttle / H-Shuttle	Synchro shuttle	Synchro shuttle / H-Shuttle	Synchro shuttle
Steering		Hydrostatic Power Steering					
Hand cluth		N/A		Std. (HS only)	N/A	Std. (HS only)	N/A
Brake type		Wet disc type					
Mechanical differential lock		Rear Standard					
Front wheel drive system		Hydraulic multi disc Clutch					
HYDRAULIC SYSTEM							
3 Point Lift Control Type		Position, Draft, Mixed Control					
Implement Pump ℓ /min(gpm)		36.4 (9.62)					
Power steering pump ℓ /min(gpm)		18.7 (4.94)	26 (6.87)	18.7 (4.94)	26 (6.87)	18.7 (4.94)	26 (6.87)
Total hydraulic flow ℓ /min(gpm)		55.1 (14.56)	62.4 (16.49)	55.1 (14.56)	62.4 (16.49)	55.1 (14.56)	62.4 (16.49)
3-point hitch type		Category I					
Lift capacity at lift point (Max.)		1,717					
Lift capacity at 24 in.behind lift point kg.f(lbs.)		1,467					
Drawbar type		Drawbar(Clevis)					
No.of standard remote valve's ports (Rear)		4					
TIRE SIZE							
Front AG.		9.5-16	8-16	9.5-16	8-16	9.5-16	8-16
Rear AG.		13.6-24					
TRAVELING SPEEDS							
Forward km/h		0.34 - 32.8					
Reverse km/h		0.33 - 32.0					
DIMENSIONS							
Overall Length (Includes 3-pt Hitch) mm		3,288	3,310	3,288	3,310	3,288	3,310
Overall Width (Minimum Tread) mm		1,486	1,596	1,596 / Narrow: 1,486			
Overall Height (with ROPS) mm		2,233	-	2,430 / Narrow: 2,233	-	2,430 / Narrow: 2,233	2,363
Overall Height (Top of Cabin) mm		-	2,363	-	2,363	-	2,363
Wheelbase mm		1,810					
Min. Ground Clearance mm		386					
Tread	Front (AG) mm	1,162	1,284	1,284 / Narrow: 1,162			
	Rear (AG) mm	1,141	1,251	1,251 / Narrow: 1,141			
Min. Turning Radius (with Brake) mm		3,420	2,640	2,640 / Narrow: 3,420	2,640	2,640 / Narrow: 3,420	2,640
Weight with ROPS / CABIN kg.f		1,610 / -	- / 1,848	1,610 / -	- / 1,848	1,610 / -	- / 1,848
Max. permissible weight kg.f		2,885	3,447	2,885	3,447	2,885	3,447

* NOTE : Specifications and design are subject to change without notice.

STANDARD EQUIPMENT

- Parking Brake
 - Electric Panel
 - Horn
 - Head Lamp
 - Signal Lamp
 - Fuel Tank Cap
- PTO Cover
 - Cup + Phone Holder
 - Deck Mat
 - Remote Hydraulic Valves (4Ports)
 - Auto PTO
 - Stationary PTO

OPTIONAL EQUIPMENT

- Front / Rear Working Light (Cab Model Std)
 - Power Socket
 - Fuel Heater
 - Front Weight
- Rear Tire Weight (only for AG Tires)
 - Sun Canopy (Rear ROPS)
 - Optional PTO KIT (1,000 rpm)
 - Stereo (Bluetooth)
 - Front Fender

ATTACHMENTS

- Front End Loader



רח' גשר העץ 46, פארק תעשיות עמק חפר ת.ד. 12097 מיקוד 3877701
טל. 04-6225591 | www.cla.co.il | info@cla.co.il



DK20 Series
45 - 58 HP



DK20 SERIES

BRILIANT PERFORMANCE AT THE RIGHT PRICE

The DK10 Series is fully specified to suit any job that demands a durable compact tractor. Ranging from 45 hp to 58 hp, this series of high-performance compact tractors packs impressive power and smooth handling into one dependable workhorse.

CAB or Rear & Mid ROPS
Fuel-Efficient Diesel Engine
Dual HST Pedal (HST Model)

Powerful & Rugged
Excellent Value
PTO Cruise Control



Real Compact

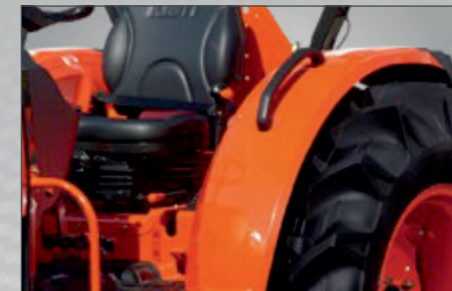
Perfectly designed to fit for orchard, vineyard without damaging crops. Also standard Mid ROPS for narrow T2 model protects a operator from low hanging branches in orchard and vineyard. With compact body size, it is much easier to work and turn in a narrow space (T2 certificate only for narrow model)

1 Tiltble Power Steering

The standard power steering reduces considerably the effort in driving necessary to turn frequently or in tight radius.

HST Linked Easy Speed

When the HST linked pedal is engaged, the HST pedal and the engine rpm are synchronized. This reduces fuel consumption and simplifies tractor operation for a variety of utility and loader applications.



Fender Grip (ROPS model)

Easy hop on/off available with fender grips from either side.



High Ground Clearance

The minimum ground clearance helps smooth ride on rocky or uneven terrain.

2 Deluxe Suspension Seat

Ergonomic and adjustable suspension seat allows the operator to ride in comfort and work no matter what the task may be.

3 Single Lever Joystick(CAB Model)

Ergonomically designed Joystick Lever for front loader is standard on DK20 Cab series

4 Dual HST Pedal (HST)

Two-pedal system for HST model with smooth engagement makes it even simpler to drive forward and reverse and to control the speed.



* All product images are for illustrative purpose only and may differ from the actual product.